

EMAAR

SUNRISE BAY

# COMMUNITY NEWS



ISSUE 1  
2022

---



## Trash it right

Parking areas are the first thing you see when driving into your community. It is a safe haven for our cars, protecting it from the environment and other external dangers. So, it's vital that our parking areas are as pristine as the rest of the community.

We have just installed trash bins on every parking floor, from the ground level to P5 level to ensure that users have a designated place to throw their garbage.

### **Here are few things to remember when using these bins:**

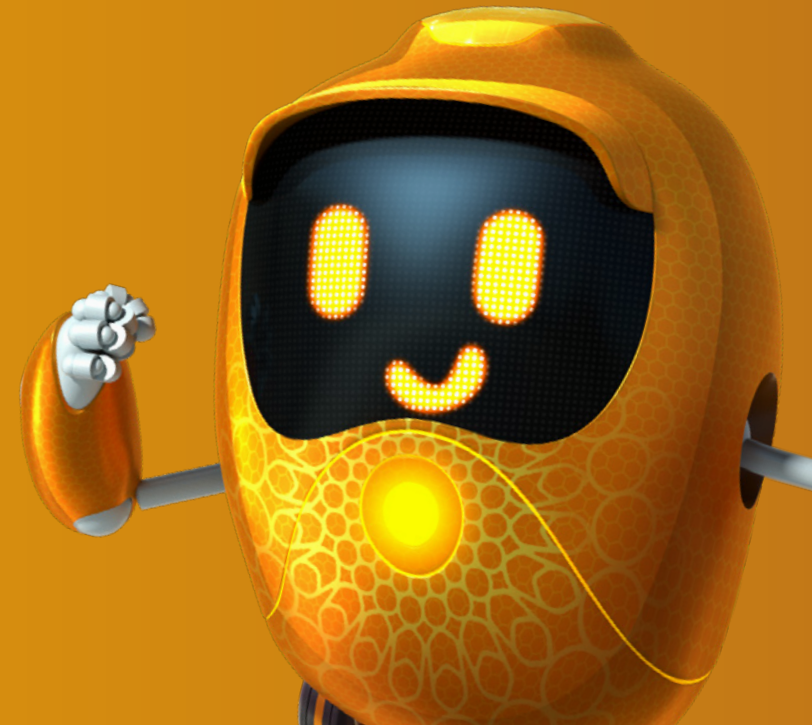
- When disposing of cigarettes, ensure that you extinguish the butts and throw them in the bins.
- Please do not deface the trash receptacle by spray painting, scratching, or kicking it over.
- Do not drop the trash around the bin, make sure waste is disposed properly inside the bins.
- Do not overfill the bins. Not only does it look unsightly but can lead to leakage of the items inside the bin. You can simply inform the concierge or any community cleaner to get it cleared.
- Do not dispose bulky cardboard boxes in or around the bins.



## Expo 2020 at Dubai Marina

Expo came to Dubai Marina Walk on 31st January and brought a friend along – **Opti, the adorable robot mascot.**

Residents were treated to an array of goodies including free ice cream, free Expo tickets, food & beverage vouchers, along with free shuttle bus service to visit the Expo site. It was an event not to be missed!





## How loud is too loud?

After a hard day of work or during precious weekends, we all crave peace and tranquility. Excess noise intruding into your home is disturbing and can affect your health and well-being.

**Here are instances when noise is considered too loud within the community:**



If heard by neighbours when inside their homes with windows and doors closed.



Obnoxious activities that affect the quiet environment in the community.



Noises from pets, car stereos, TVs, speakers, music instruments, revving vehicles.

**Here is a low-down on the rules around noise:**

- Garden equipment and power tools can be operated only between 7 AM and 8 PM.
- No noisy work is allowed on Saturdays and Sundays.
- Loud parties, furniture movement is not allowed after 10 PM.

**Here's a tip:** An ill-timed explosion of noise can result in frustrated neighbours that could lead to hostile relations sooner or later. So if you are hosting a party, give them a heads-up for the timings and guests.

**Golden rule:** Let's be considerate and treat our neighbours the way we want them to treat us.

## What you can do for your pets?

Biscuit is a two-year old terrier who moved into our community but the poor chap's excessive barking at nights and routine dog walks have left the neighbours irritated.

Pets like him are part of our communities and if you have a pet of your own, here are simple rules to follow to make life harmonious for you, your pet, and your neighbours:



Ensure pets wear collars when outdoors.



Always keep dogs on a leash when on walks.



Carry pet waste bags and pick after your pet.



Dispose in pet waste bins seen in common areas.



Dogs are not allowed at any amenities.

*\*Except the dog park*



Dog handlers must be aware of these rules.

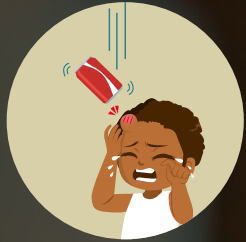
### Here are some other important rules to consider:

- Do not leave pet food in common areas, front porches, decks or balconies.
- If your puppy whines at night – it could be separation anxiety, pain, medical issue, boredom or more. Schedule a visit with your vet to take a closer look.
- If you notice a lost, abandoned or an inhumanely treated pet, call 800 900 and report it. Disturbances or even attacks by pets can be reported.



# Don't risk it at your balcony

Imagine these scenarios:



A child standing in his balcony is suddenly hit by a full soda can, dropped from the balcony above. He is rushed to the emergency room.

**Remember: Projectiles can injure – do not throw any waste and sharp objects.**



Carpets, toys, satellite dishes and other materials stored in balconies are a safety hazard, can react to heat and humidity and attracts pests.

**Remember: Avoid using balconies as storage areas.**



A man smoking on the balcony, carelessly flicks the butt over the railing, not realizing it isn't fully extinguished. The embers fall on the fabric-covered parking shade, starting a fire.

**Remember: Use ashtrays and don't fling butts over the rails.**

**Sounds scary, doesn't it? Unfortunately, these are realistic scenarios that can happen anywhere. Please note that these violations are not just against the Community Rules, they are also against the Dubai Municipality laws.**





## Watch your stove!

False alarms can be a nuisance - not just to you, but others around you. It's like crying wolf. Did you know that smoke emission from unattended cooking is one of the main causes of false alarm in the community?

### Remember these tips to reduce false alarms

- A watchful eye is all you need. If you need to leave the kitchen, make sure the flame is on low or switched off.
- If there is excessive smoke while cooking, make sure to open your windows and switch on the exhaust fan.
- Check toaster settings prior to use and do not walk away from a toaster in use.
- Do not smoke near smoke detectors and do not direct aerosol spray at it.
- Ensure enough ventilation for steam and fumes is installed, particularly in bathrooms and kitchens.
- Run a maintenance check on your fire alarm once a month and replace batteries every year if they are lead or alkaline.

**Let's endeavour to alleviate this problem and enjoy a peaceful community life.**

## Garbage room etiquette

All of us loathe trash festering in our homes, reeking, spreading bacteria and breeding pests. However, improperly disposed household waste in the garbage room results in the same. They can permeate through the vents and infest your homes.

Garbage rooms need to be well maintained and clutter free to ensure they don't create a breeding ground for pests. To maintain a pristine and healthy community, we request that you practice these simple, yet proper waste disposal guidelines:



All bags must be neatly tied to prevent spill or chute blockage.



Use waste bags that fit the chute door.



Make sure the chute door is properly closed once used.



Do not dump items on the garbage room floor.



Do not dispose hazardous or liquid waste in garbage bins.



Do not keep bulky or large recyclables in the garbage room.







# SELFIE challenge

Where is your favourite spot in your community? Is it the lake you frequent for your morning jogs or the gym where you burn the weekend calories? Perhaps it's your favourite bench in the park where you can have some alone time.

Send a selfie (of yourself, of course!) at your favourite place in the community to [events@ecm.ae](mailto:events@ecm.ae) to win a prize that will have you clicking more.

**Don't forget to mention your name, address, and mobile number.  
Last date of entry is 5th May 2022.**

**Best entry  
wins one night  
stay with breakfast  
at Vida Beach  
Resort UAQ!**



Join the **PANCAKE** party

Lil' chefs, think you're a master at pancake making? Then accept our challenge, batter-up, and get cooking! Be it with fruits, nuts, chocolates, vegan, healthy or eggless – let your imagination soar and astound us with your own unique pancake creation.

Submit a high-res picture of yourself and your creation to [events@ecm.ae](mailto:events@ecm.ae) along with your name, address and mobile number, before 5th May 2022.

**Contest open to kids below 15.**

**Best entry  
wins one night  
stay with breakfast  
at Vida Beach  
Resort UAQ!**

C<sub>3</sub> O<sub>1</sub> M<sub>3</sub> M<sub>3</sub> U<sub>1</sub> Ñ<sub>8</sub> I<sub>1</sub> T<sub>1</sub> Y<sub>4</sub>  
 C<sub>3</sub> R<sub>1</sub> O<sub>1</sub> S<sub>1</sub> S<sub>1</sub> W<sub>4</sub> O<sub>1</sub> R<sub>1</sub> D<sub>2</sub>  
 C<sub>3</sub> H<sub>4</sub> A<sub>1</sub> L<sub>1</sub> L<sub>1</sub> E<sub>1</sub> Ñ<sub>8</sub> G<sub>2</sub> E<sub>1</sub>

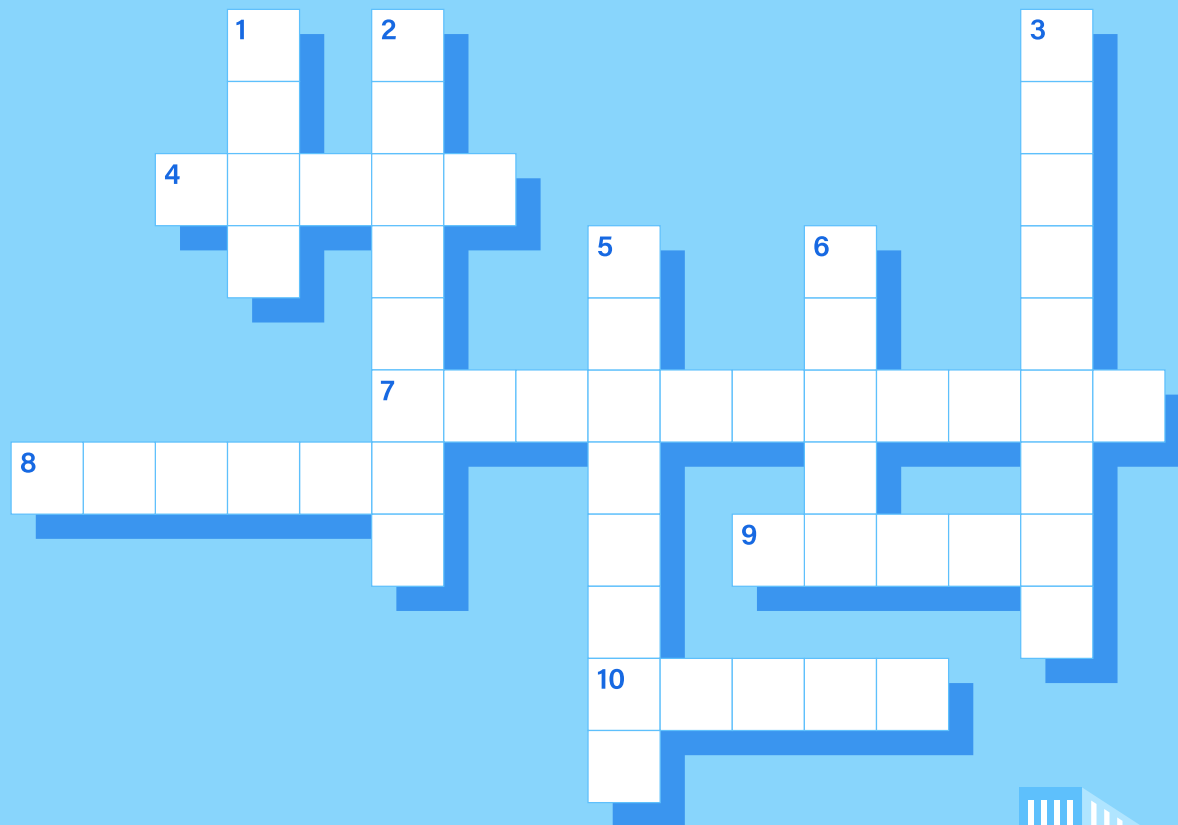
Put on your thinking caps and try to work your way through the clues. The first five to solve the crossword win exciting prizes! Send your answers to [events@ecm.ae](mailto:events@ecm.ae) with your full name, address and mobile number before 5th May 2022.

**Down**

- 1. Entryway
- 2. Wall scrawl
- 3. Cereal box material
- 5. Foolhardy, rash
- 6. Signals danger

**Across**

- 4. Wander off
- 7. Vaccination
- 8. Protects the brain
- 9. Glowing coal
- 10. Chimney yield



ALIVE  
AND  
INSPIRED



VIDA  
*Beach Resort*  
UMM AL QUWAIN

## A STAYCATION TO REMEMBER - WITH AN UNFORGETTABLE VIEW AT VIDA BEACH RESORT UMM AL QUWAIN

This month, experience seaside bliss like never before at Vida Beach Resort Umm Al Quwain. Take advantage of a Deluxe Partial Sea View Room at AED 500 per room, per night, including breakfast for 2 people with a gorgeous view - the perfect spot to capture those evening sunset snaps! Use the code EMAARCOM when booking to avail this offer.

*stay connected*  

VIDAHOTELS.COM



## Useful numbers

---

Fire	997
Ambulance	998
Police	999
Al Ameen	800 4888
Dubai Municipality	800 900
Taxi (RTA)	800 9090
DEWA	991
Emaar Toll Free	800 EMAAR (36227)